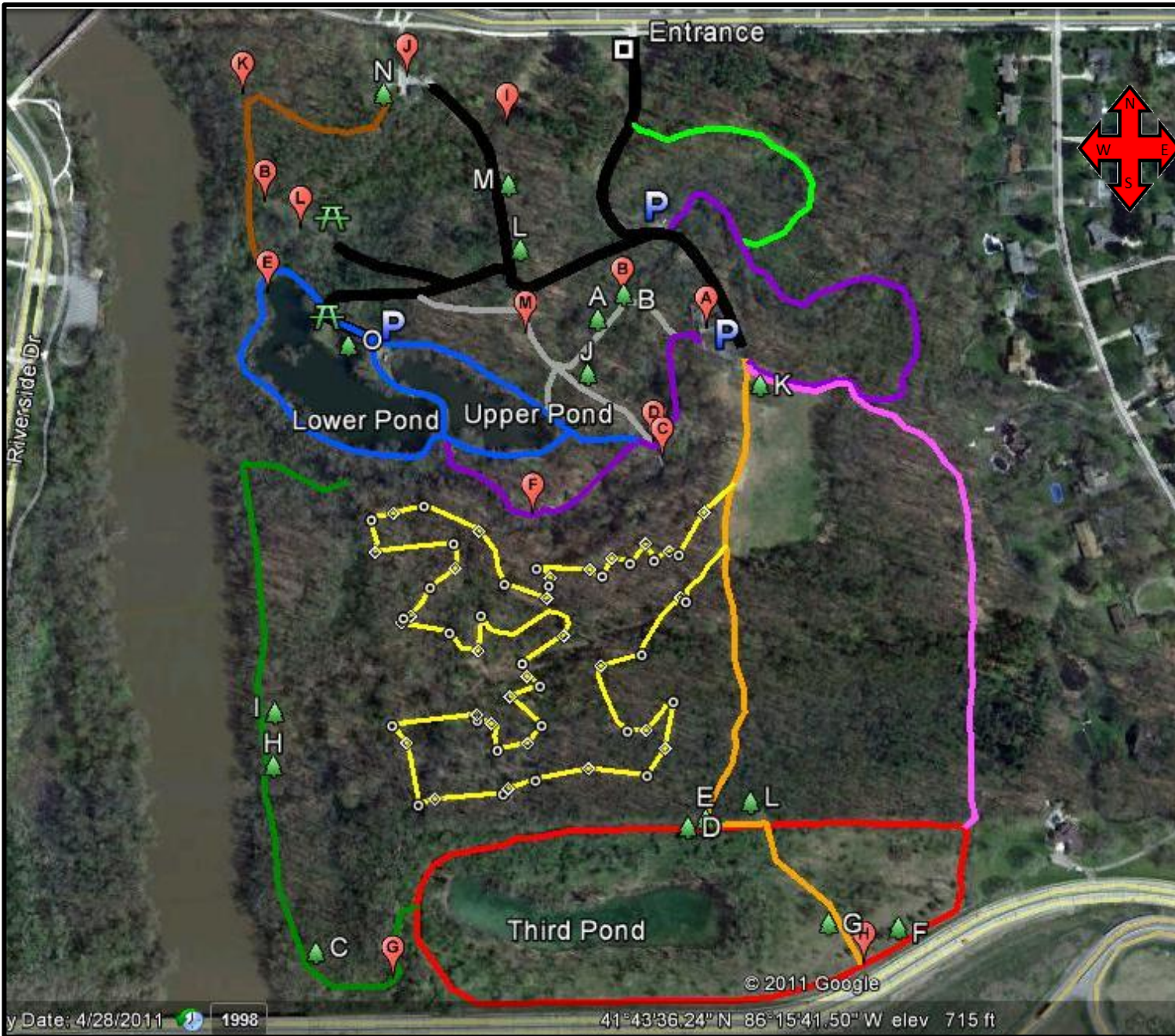


# Izaak Walton League Trail Map



## Key:

- Parking
- Picnic Area
- Land Mark
- Tree
- Archery Target
- Archery Distance Marker

## Trails:

- The Ponds Trail
- Juday Creek Trail
- East Bank Trail
- Third Pond Loop
- Emergency Road
- Brook Trails Trail
- Fieldstone Grill Path
- Archery Course
- Caretaker's Run
- Upper Ridge Trail
- Road

# Izaak Walton League Trail Map

20400 Darden Road South Bend, IN 46637

## Trail Descriptions:

**The Ponds Trail:** The Ponds Trail circles the Upper and Lower Ponds. This Trail can be reached by the Juday Creek Trail, the Fieldstone Grill Path, the Caretaker's Run, and the road. Parking and Picnic Areas are available along the trail.

**Juday Creek Trail:** The Juday Creek Trail follows Juday Creek through the property. This trail can be reached from the lodge, the ponds, and Brook Trails Trail. This trail offers access from the lodge to the Spillway and the Ponds.

**East Bank Trail:** This trail begins on the western side of the Third Pond Loop and runs parallel to the St. Joe River. Sites on this trail include the head of a natural spring, the St. Joe River, and several unique tree species. Note, the trail crosses several small creeks where there are no bridges causing the trail to be inaccessible at times due to water levels.

**Third Pond Loop:** The third pond loop circles the third pond and can be accessed from the Emergency Road trail and the Brook Trails Trail. This trail is also the starting point of the East Bank Trail and offers great views of St. Mary's.

**Emergency Road:** This trail begins at the lodge and runs past the archery range leading to the Third Pond Loop.

**Brook Trails Trail:** This trail starts at the Lodge and the Third Pond Loop and runs along the property's eastern border; Brook Trails Subdivision.

**Upper Ridge Trail:** The Upper Ridge Trail begins near the entrance and connects to the Juday Creek Trail. To prevent erosion, descend stairs carefully.

**Fieldstone Grill Path:** This path connects the Pond, the Lodge, the meadow, the road, and the spillway.

**Archery Course:** The Archery Course begins and ends at the Archery Range and contains 28 targets throughout the course. **Enter only through the entrance; do not navigate the course backwards.** Use caution while on the course.

**Caretaker's Run:** the Caretaker's run connects the Caretaker's house to the Ponds. This trail offers great views of the St. Joe River.

## Landmarks Key:



- A) Lodge
- B) Fieldstone Grill
- C) Spillway
- D) Inflow Pipe
- E) Outflow Pipe
- F) Juday Creek Spring
- G) Head of Natural Spring
- H) Emergency Gate
- I) Capture the Flag Field
- J) Caretaker's House
- K) St. Joe River Overlook
- L) Upper Meadow
- M) Meadow

## Trees Key:



- A) Cottonwood
- B) Shagbark Hickory
- C) Eastern Red Cedar
- D) Black Locust
- E) White Pine
- F) Jack Pine
- G) Hawthorn
- H) Ironwood
- I) Horse Tails
- J) Canadian Hemlock
- K) Red Oak
- L) Wild Cherry
- M) Sugar Maple
- N) Holly
- O) Sycamore

The St. Joseph County Izaak Walton League comprises over 130 acres of diverse natural habitat including Juday Creek, 3 ponds, 2 of which are stocked for fishing, the St. Joe River, wetlands, marshes and woodlands. It is an ideal family environment for hikes, picnics and exploration. A great place to teach children to fish. We offer a world class outdoor archery range and indoor archery in the Winter months. We promote conservation and environmental ethics and are a watchdog for local and regional conservation concerns. **The facility is private property, access is limited to members and their guests, and a membership badge is to be visibly worn while on the property.** For information on becoming a member, pickup a membership application in the box at the facility entrance, contact the on-site caretaker, or write to the Membership Secretary, P.O. Box 3559, South Bend, IN 46619. To find out more, call our IKE "hotline" at (574) 272-3660.

This map was created as an Eagle Scout Project from Troop 451 of South Bend, IN to the Izaak Walton League; 2011-2012